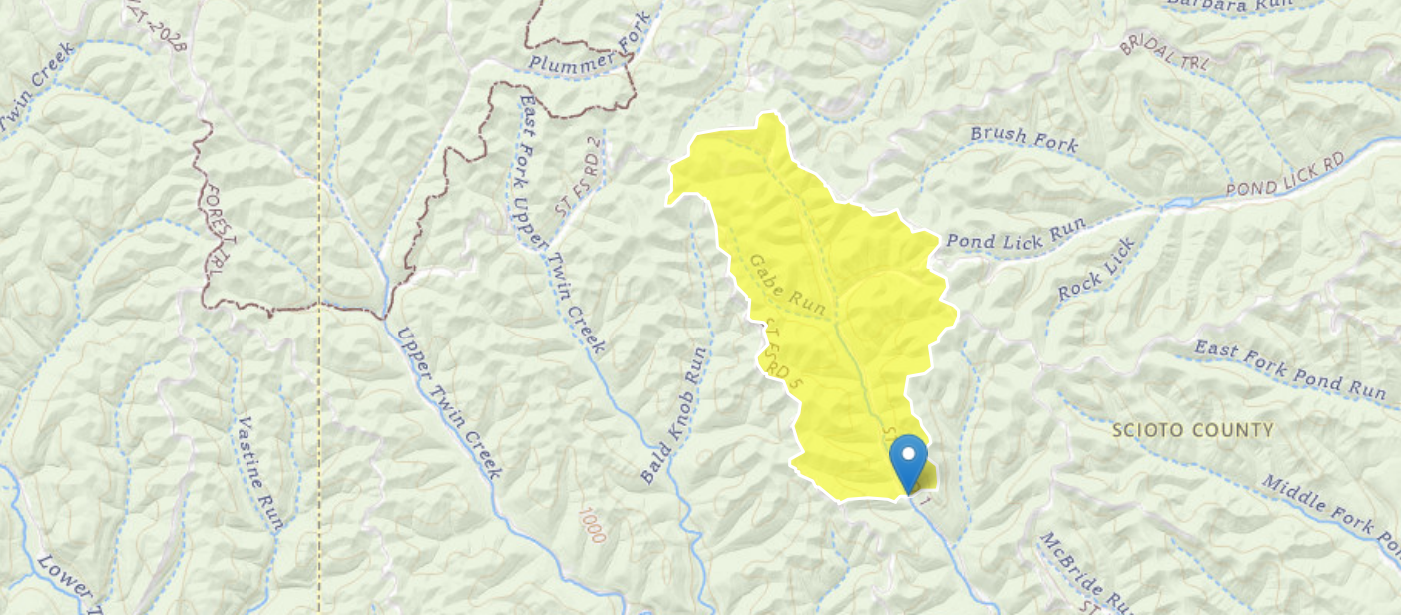


StreamStats Report - SFN 7326041

Region ID: OH
Workspace ID: OH20250513132336368000
Clicked Point (Latitude, Longitude): 38.67172, -83.20229
Time: 2025-05-13 09:24:03 -0400



Collapse All

Basin Characteristics

Parameter Code	Parameter Description	Value	Unit
CSL1085LFP	Change in elevation divided by length between points 10 and 85 percent of distance along the longest flow path to the basin divide, LFP from 2D grid	106	feet per mi
DRNAREA	Area that drains to a point on a stream	2.12	square miles
FOREST	Percentage of area covered by forest	99.7	percent
LAT_CENT	Latitude of Basin Centroid	38.6882	decimal degrees
LC92STOR	Percentage of water bodies and wetlands determined from the NLCD	0	percent
OHREGA	Ohio Region A Indicator	0	dimensionless
OHREGC	Ohio Region C Indicator	1	dimensionless
PRECIPCENT	Mean Annual Precip at Basin Centroid	43.2	inches
STREAM_VARG	Streamflow variability index as defined in WRIR 02-4068, computed from regional grid	0.92	dimensionless

➤ Peak-Flow Statistics

Peak-Flow Statistics Parameters [Peak Flow Full Model Reg C SIR2019 5018]

Parameter Code	Parameter Name	Value	Units	Min Limit	Max Limit
CSL1085LFP	Stream Slope 10 and 85 Longest Flow Path	106	feet per mi	3.24	131
DRNAREA	Drainage Area	2.12	square miles	0.26	2514
LC92STOR	Percent Storage from NLCD1992	0	percent	0	1.23
OHREGA	Ohio Region A Indicator 1 if in A else 0	0	dimensionless	0	1
OHREGC	Ohio Region C Indicator 1 if in C else 0	1	dimensionless	0	1

Peak-Flow Statistics Flow Report [Peak Flow Full Model Reg C SIR2019 5018]

PIL: Lower 90% Prediction Interval, PIU: Upper 90% Prediction Interval, ASEp: Average Standard Error of Prediction, SE: Standard Error, PC: Percent Correct, RMSE: Root Mean Squared Error, PseudoR²: Pseudo R Squared (other -- see report)

Statistic	Value	Unit	PIL	PIU	ASEp
50-percent AEP flood	378	ft ³ /s	195	735	40.1
20-percent AEP flood	669	ft ³ /s	360	1240	37.2
10-percent AEP flood	902	ft ³ /s	482	1690	37.6
4-percent AEP flood	1240	ft ³ /s	658	2340	38.1
2-percent AEP flood	1520	ft ³ /s	797	2900	37.8
1-percent AEP flood	1820	ft ³ /s	943	3510	39.6
0.2-percent AEP flood	2610	ft ³ /s	1340	5100	40.3

Peak-Flow Statistics Citations

Koltun, G.F., 2019, Flood-frequency estimates for Ohio streamgages based on data through water year 2015 and techniques for estimating flood-frequency characteristics of rural, unregulated Ohio streams: U.S. Geological Survey Scientific Investigations Report 2019–5018, 25 p. (<https://dx.doi.org/10.3133/sir20195018>)

➤ Monthly Flow Statistics

Monthly Flow Statistics Parameters [Low Flow LatLE 41.2 wri02 4068]

Parameter Code	Parameter Name	Value	Units	Min Limit	Max Limit
DRNAREA	Drainage Area	2.12	square miles	0.12	7422
FOREST	Percent Forest	99.7	percent	0	99.1
LAT_CENT	Latitude of Basin Centroid	38.6882	decimal degrees	38.68	41.2
LC92STOR	Percent Storage from NLCD1992	0	percent	0	19
PRECIPCENT	Mean Annual Precip at Basin Centroid	43.2	inches	34	43.2
STREAM_VARG	Streamflow Variability Index from Grid	0.92	dimensionless	0.25	1.13

Monthly Flow Statistics Disclaimers [Low Flow LatLE 41.2 wri02 4068]

One or more of the parameters is outside the suggested range. Estimates were extrapolated with unknown errors.

Monthly Flow Statistics Flow Report [Low Flow LatLE 41.2 wri02 4068]

Statistic	Value	Unit
January Mean Flow	3.56	ft ³ /s
February Mean Flow	4.95	ft ³ /s
March Mean Flow	5.37	ft ³ /s
April Mean Flow	5.01	ft ³ /s
May Mean Flow	4	ft ³ /s
June Mean Flow	1.54	ft ³ /s
July Mean Flow	0.726	ft ³ /s
August Mean Flow	0.63	ft ³ /s
September Mean Flow	0.443	ft ³ /s
October Mean Flow	0.281	ft ³ /s
November Mean Flow	1.16	ft ³ /s
December Mean Flow	2.75	ft ³ /s

Monthly Flow Statistics Citations

Koltun, G. F., and Whitehead, M. T.,2002, Techniques for Estimating Selected Streamflow Characteristics of Rural, Unregulated Streams in Ohio: U. S. Geological Survey Water-Resources Investigations Report 02-4068, 50 p (<https://pubs.er.usgs.gov/publication/wri024068>)

USGS Data Disclaimer: Unless otherwise stated, all data, metadata and related materials are considered to satisfy the quality standards relative to the purpose for which the data were collected. Although these data and associated metadata have been reviewed for accuracy and completeness and approved for release by the U.S. Geological Survey (USGS), no warranty expressed or implied is made regarding the display or utility of the data for other purposes, nor on all computer systems, nor shall the act of distribution constitute any such warranty.

USGS Software Disclaimer: This software has been approved for release by the U.S. Geological Survey (USGS). Although the software has been subjected to rigorous review, the USGS reserves the right to update the software as needed pursuant to further analysis and review. No warranty, expressed or implied, is made by the USGS or the U.S. Government as to the functionality of the software and related material nor shall the fact of release constitute any such warranty. Furthermore, the software is released on condition that neither the USGS nor the U.S. Government shall be held liable for any damages resulting from its authorized or unauthorized use.

USGS Product Names Disclaimer: Any use of trade, firm, or product names is for descriptive purposes only and does not imply endorsement by the U.S. Government.

Application Version: 4.28.1

StreamStats Services Version: 1.2.22

NSS Services Version: 2.2.1